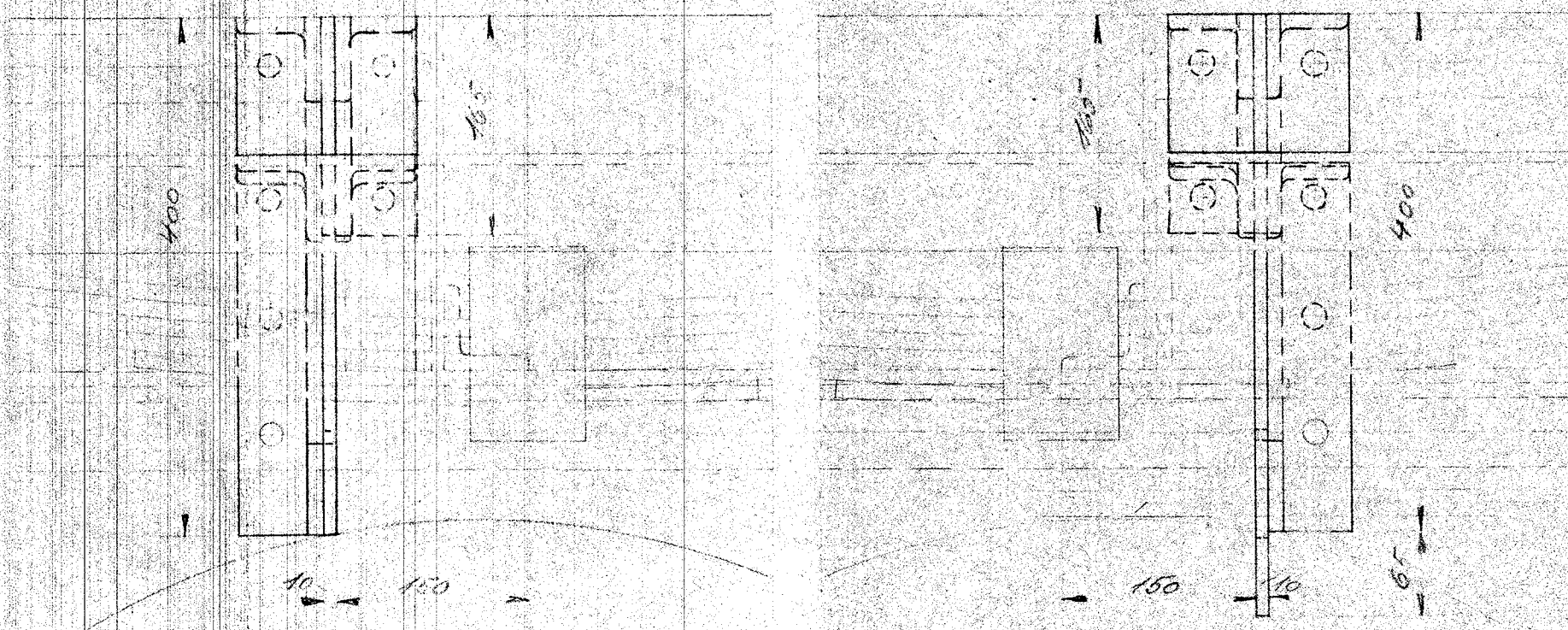
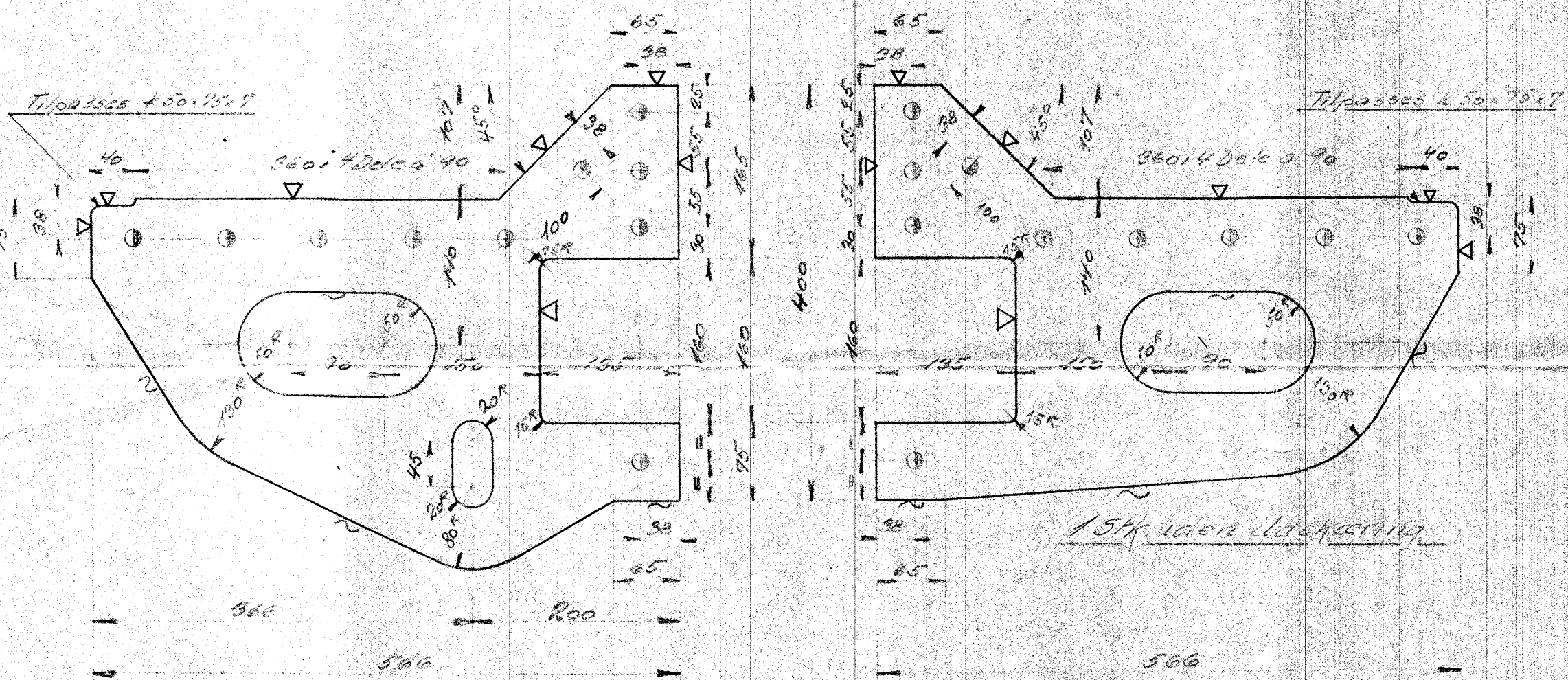


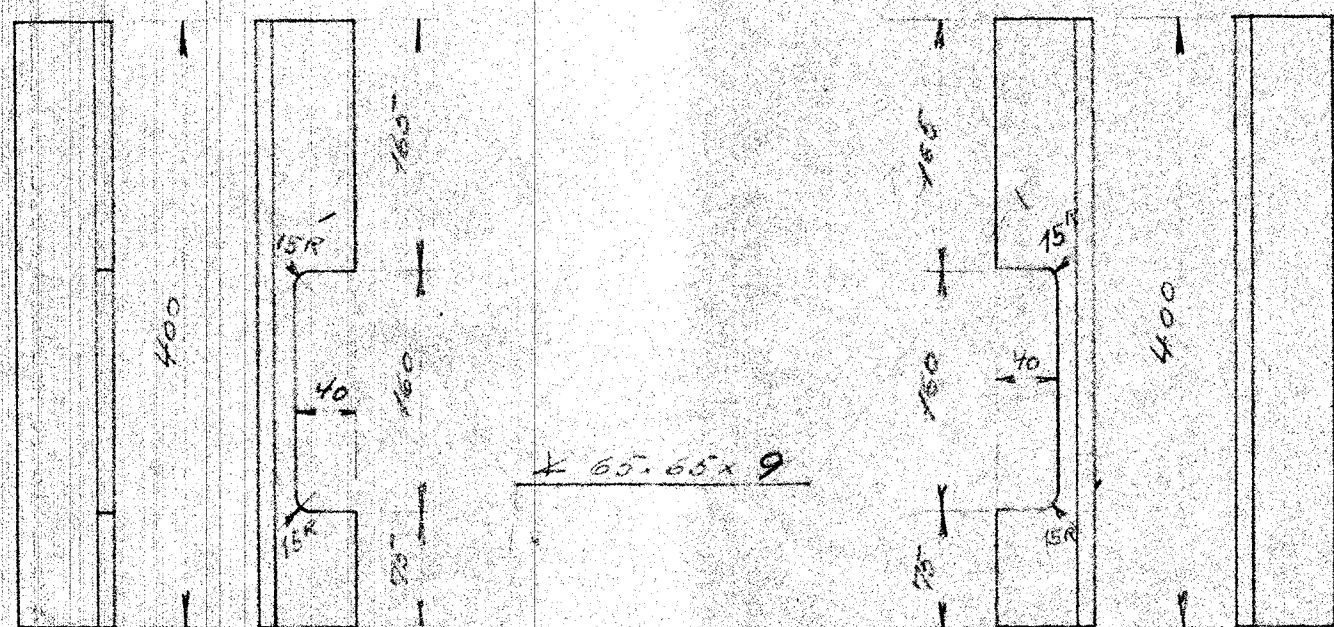
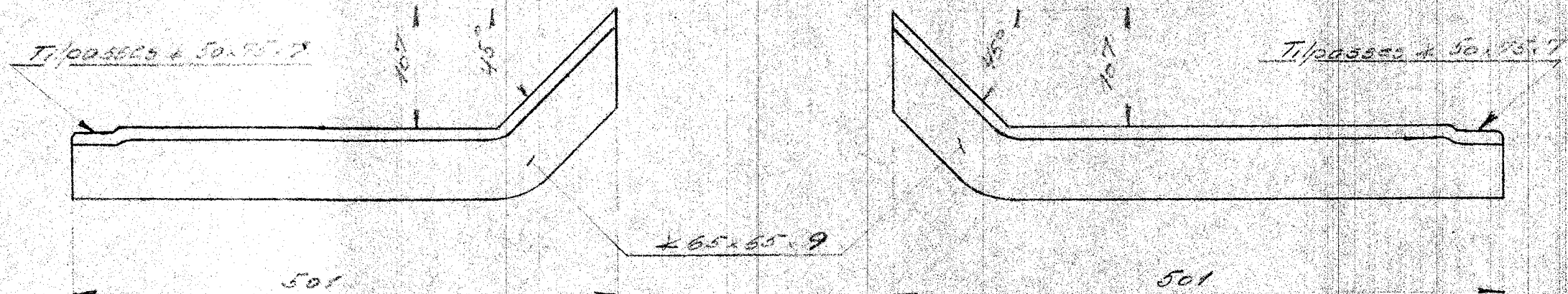
573
 Løbetilstandsbarere Tegn
 117-14091 Kør og Værk
 2712 side 1/10111



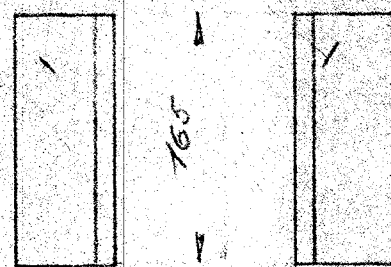
Bremse til Værk 117-14091



154. uden Udskæring



$\pm 65.65 \times 9$



1/5 FRIEDS MARKUS
Gangpladebarere ved Løbehjul.
 Dieselmotor 416 HK Motorloko
 14/6. 1933. 1:5 128L-14090